

mäder pneumatic and manual slide tables simplify manual and automatic insertion and therefore increase the economic efficiency of assembly processes.

The advantages:

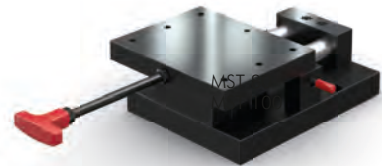
- ▶ Insertion is carried out outside the danger area
- ▶ Parts can be preassembled spatially unhindered by the press
- ▶ Versatile options for automation and feed tasks
- ▶ Precise positioning of workpieces

Other quality features:

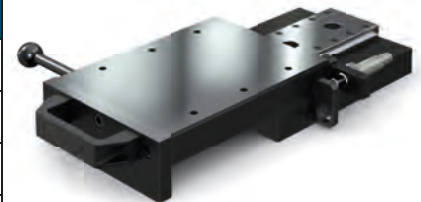
Manual slide table	•	•	•	
Pneumatic slide table				•
Teflon slideway	•	•		
Hardened and ground guide columns	•	•		
Precision cross-roller guide with high loading capacity			•	•
Slideway adjustable without play			•	•
Installs transversely or longitudinally	•	•	•	•
Damping at both end positions			•	•
Self-latching in end position	•	•	•	•
Different strokes on request	•	•		



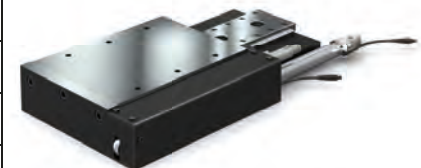
MST 80



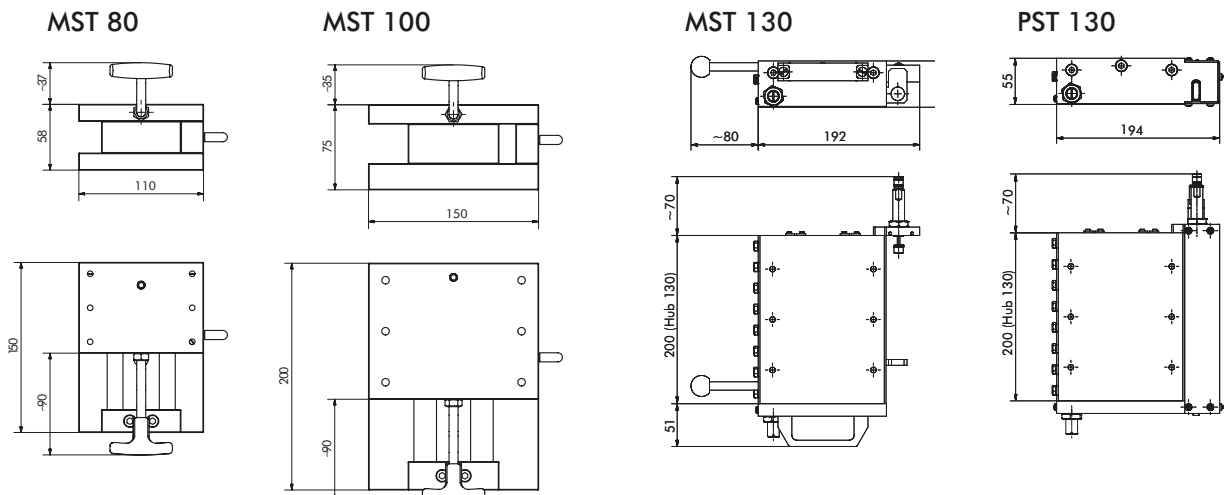
MST 100



MST 130



PST 130



Installation examples



EP 500 with MST 80



DA type press with PST 130
Installation from the front



Installation from the side

Slide tables

Type		MST 80	MST 100	MST 130	PST 130
Stroke	mm	80	100	130	130
Load capacity	kN	12	30	50	50
Suitable for presses with throat	mm	63/80	80/100	100/130/150/250/300	100/130/150/250/300