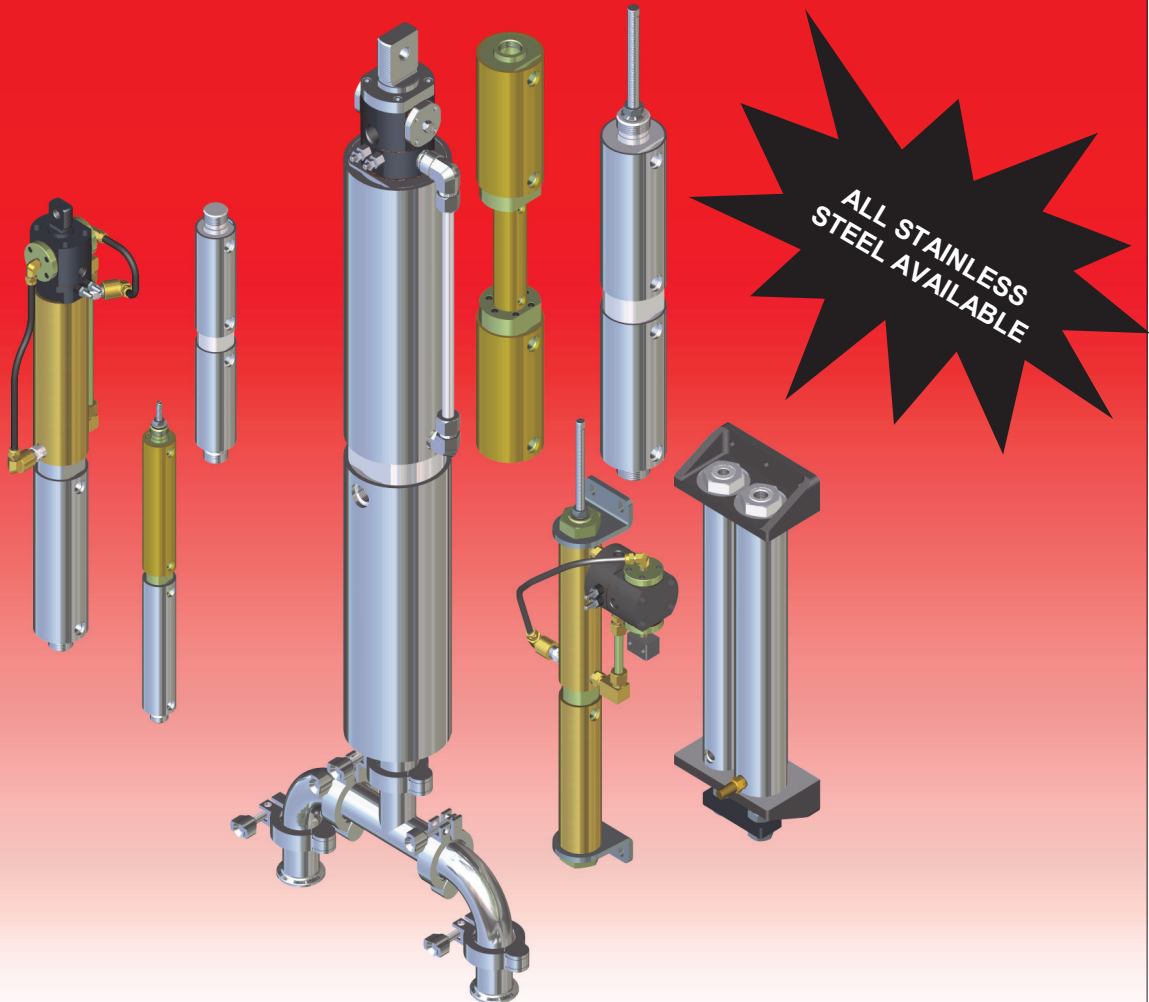




ALLEN AIR CORP.

DISPENSING & TRANSFER PUMPS



Allenair Manufactures Dispensing & Transfer Pumps

- For the pumping and transfer of most liquids.
- Accurately dispense various food products and chemicals.
- Pumps can be made in a number of variations, which can include different seal and pump materials depending on application requirements.

CALL FOR APPLICATION ASSISTANCE

ALLEN AIR CORP.

QUALITY FIRST...TODAY



ALLEN AIR CORP.

DISPENSING & TRANSFER PUMPS

APPLICATION IDEAS

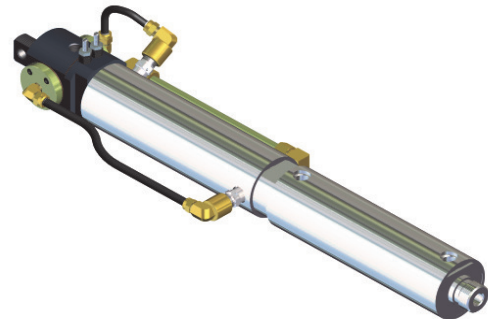
Description:

The Allenair pumps are designed around our tandem cylinder design joining two cylinders together with a common head and rod. The total pump unit is divided into two sections; the drive section and the pump section. By utilizing a four-way valve to operate the drive cylinder, the common rod and pump piston will move in unison, creating suction on the up stroke and pressure on the down stroke. An example of this action is that of a syringe.

PUMPING CORROSIVE LIQUIDS.

Used to pump deionized water, the photograph to the right depicts an **EVTP** model pump with an all stainless steel pump chamber, utilizing a **VCR** automatic reciprocating Valve-in-Head® drive cylinder.

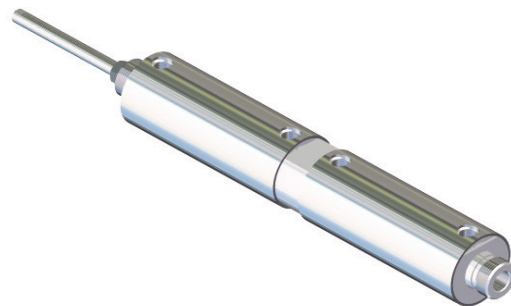
EVTP 2 X 6 VCR CS



DISPENSING FOOD PRODUCTS.

Used to dispense lard or high viscosity liquids the photograph to the right depicts an **ALL 300 Series Stainless Steel SSETP** model pump. This pump utilizes an **SA** adjustment rod to produce a variable displacement chamber, with exceptional repeatability.

ETP 2-1/2 X 3 J2 SA CS



DISPENSING PETROLEUM BASED PRODUCTS.

Used to dispense lubricating oil, the photograph to the right depicts an **EVTP** model pump. This pump utilizes a **VSAT** valve option to dispense a fixed volume of oil while maintaining the ability to adjust that volume using the **SA** adjustment rod.

EVTP 1-1/2 X 3 1/4 VSAT J2 CS

