

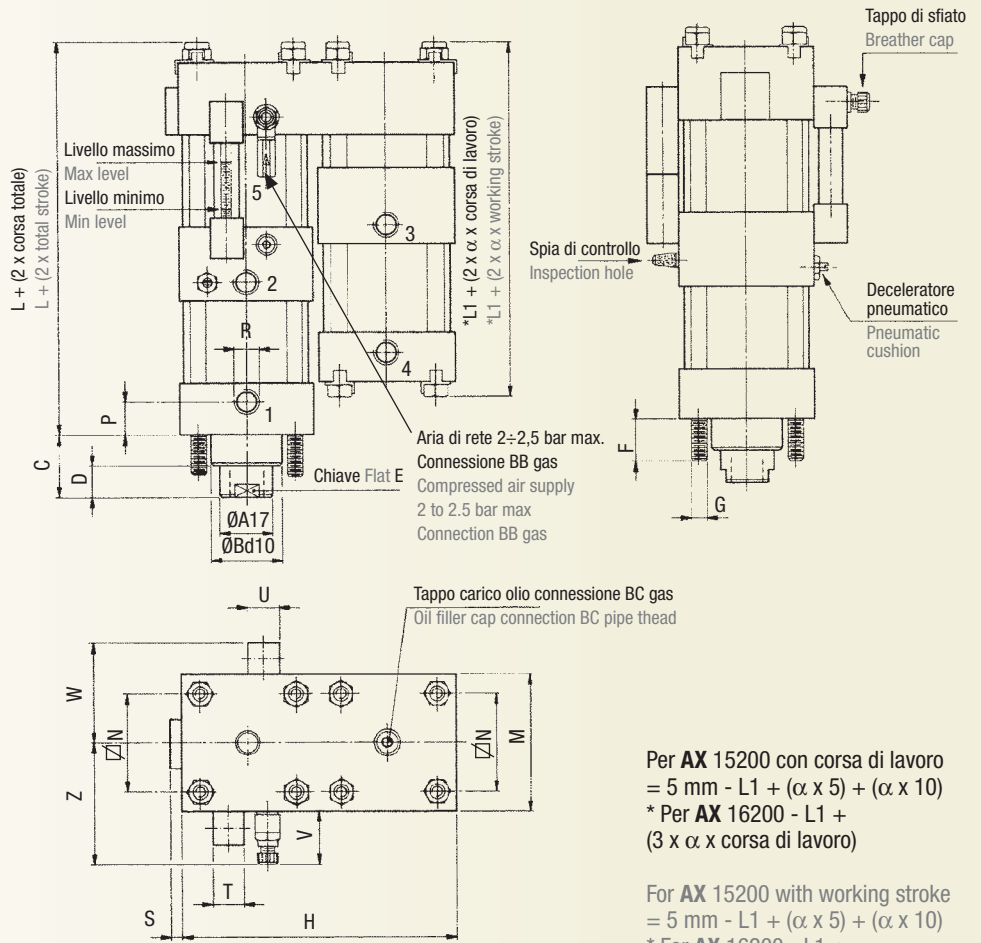
# Gruppi di potenza Serie AX

## Power groups Series AX

### Caratteristiche dimensionali

#### Dimensional features

Tipo/Type NN  
unità base/base unit



Per AX 15200 con corsa di lavoro = 5 mm - L1 + ( $\alpha$  x 5) + ( $\alpha$  x 10)  
 \* Per AX 16200 - L1 + (3 x  $\alpha$  x corsa di lavoro)

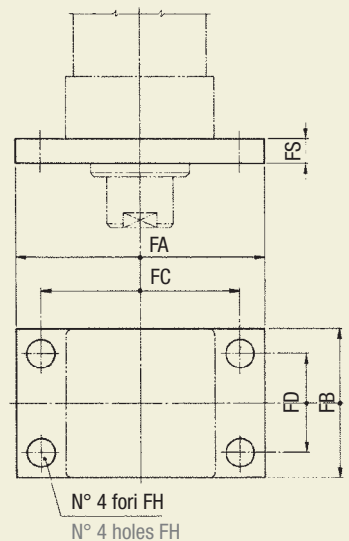
For AX 15200 with working stroke = 5 mm - L1 + ( $\alpha$  x 5) + ( $\alpha$  x 10)  
 \* For AX 16200 - L1 + (3 x  $\alpha$  x working stroke)

Serie/Series	AX	AX	AX	AX	AX	AX	AX	AX	AX
Tipo/Type	0840	0950	1063	1180	12100	13125	14160	15200	16200
$\alpha^*$	7,2	6,3	7,8	9,8	11,2	11,2	11,2	11,2	12
A	22	22	30	40	60	80	100	100	100
B	40	40	50	70	90	110	130	130	130
C	30	30	40	50	60	60	95	95	140
D	25	25	25	25	35	35	40	40	85
E	17	17	24	32	foro 8x2 hole	foro 8x2 hole	foro 10x2 hole	foro 10x2 hole	foro 10x2 hole
F	31	33	40	45	65	73	95	95	103
G	M6	M8	M10	M12	M16	M20	M24	M24	M36x3
H	105	145	165	205	265	305	370	445	505
L	210	225	260	260	345	375	390	415	450
L1	185	215	185	185	235	255	280	295	475
M	50	70	80	100	130	150	185	220	250
N	39	50	61	75	100	110	140	175	180
P	15	15	18	15	17,5	20	25	35	35
R	G1/8"	G1/4"	G3/8"	G3/8"	G1/2"	G1/2"	G1/2"	G1/2"	G3/4"
S	-	-	13	13	15	15	-	-	-
T	20	27	27	27	27	27	27	27	27
U	20	27	27	27	45	45	45	45	45
V	45	45	45	45	53	53	53	53	53
W	45	62	67	77	110	120	138	155	170
Z	70	80	85	95	118	128	145	163	178
BB	G1/8"	G1/8"	G1/8"	G1/8"	G1/4"	G1/4"	G1/4"	G1/4"	G1/4"
BC	G1/8"	G1/4"	G3/8"	G3/8"	G1/2"	G1/2"	G1/2"	G1/2"	G1/2"

### Attacco flangia

#### Flange mounting

Codice/Code FG



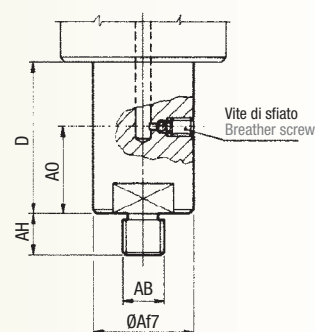
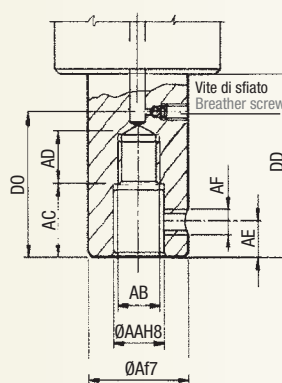
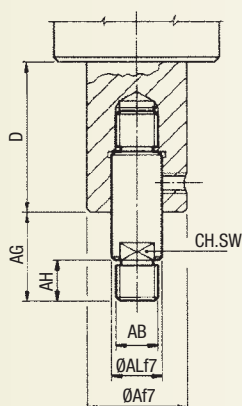
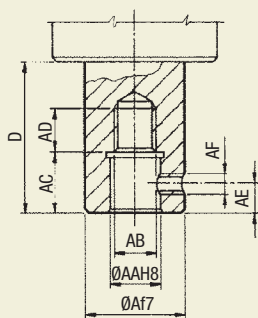
$\alpha^*$  Coefficiente corsa di lavoro / Coefficient of working stroke

Stelo femmina  
Piston rod female  
Standard

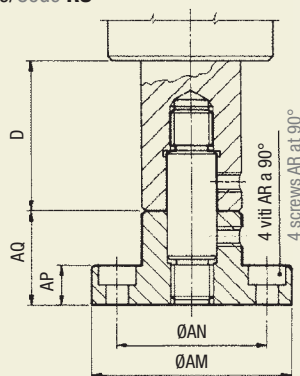
Stelo con codolo  
Piston rod with rod end  
Codice/Code **CS**

**Per area di lavoro / for working areas 2**  
Stelo femmina  
Piston rod female

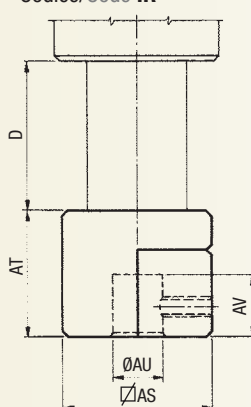
Stelo maschio  
Piston rod male



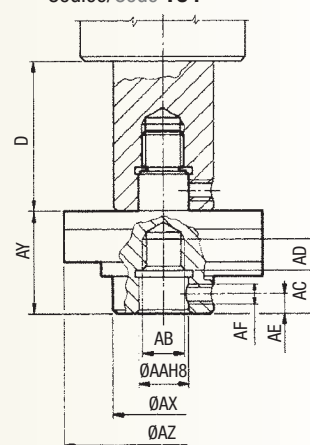
Mozzo portastampi  
Die holder pad  
Codice/Code **RS**



Mozzo portastampi radiale  
Radial die holder pad  
Codice/Code **IR**



Con cella di carico  
With load cell  
Codice/Code **TC4**



Tipo/Type

AX	FA	FB	FC	FD	FH	FS
0840	85	50	70	39	6,5	8
0950	115	70	95	50	8,5	10
1063	135	80	110	61	10,5	12
1180	165	100	135	75	12,5	15
12100	200	130	170	100	17	20
13125	240	150	200	110	21	25
14160	305	200	255	140	25	30
15200	340	250	290	175	25	30
16200	440	250	370	180	38	40

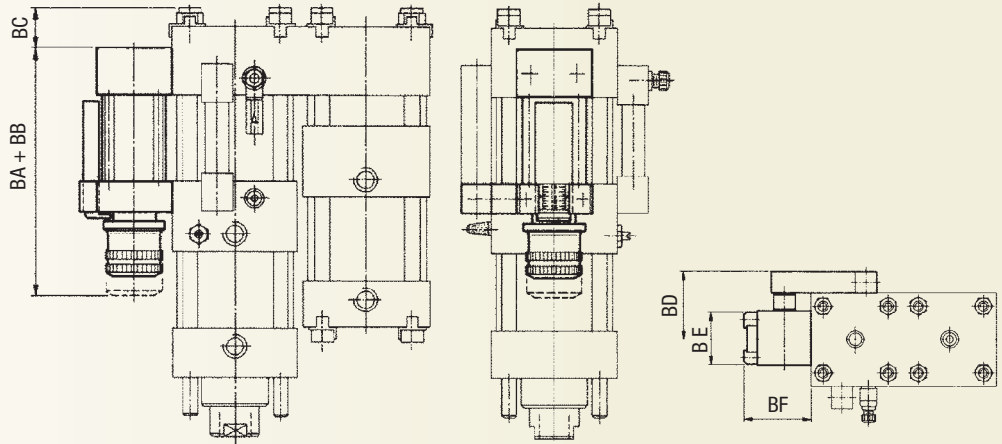
Serie/Serie

Tipo/Type	AX 0840	AX 0950	AX 1063	AX 1180	AX 12100	AX 13125	AX 14160	AX 15200	AX 16200
A	22	22	30	40	60	80	100	100	100
D	25	25	25	25	35	35	40	40	85
AA	12	12	16	20	25	25	30	30	30
AB	M10x1,5	M10x1,5	M12x1,5	M16x1,5	M20x1,5	M20x1,5	M27x2	M27x2	27x2
AC	14	14	18	22	28	28	35	35	35
AD	10	10	12	16	20	20	27	27	27
AE	6	6	8	10	12	12	15	15	15
AF	M5	M5	M6	M8	M8	M8	M8	M8	M8
AG	19	19	23	33	38	38	52	52	52
AH	10	10	12	16	20	20	27	27	27
AL	12	12	16	20	25	25	30	30	30
AM	49	49	59	78	98	118	158	158	158
AN	36	36	46	60	78	98	130	130	130
AP	10	10	12	15	20	20	25	25	25
AQ	20	20	25	35	40	40	55	55	55
AR	M5	M5	M6	M8	M8	M8	M12	M12	M12
AS	35	35	50	50	60	80	100	100	100
AT	32	32	35	35	50	50	80	80	80
AU	12	12	16	20	25	25	30	30	30
AV	20	20	18	22	28	28	35	35	35
AY	70	70	70	75	85	85	110	110	155
AX	22	22	30	40	60	60	80	80	90
AZ	100	100	100	127	127	127	165	165	165
SW	10	10	12	16	20	20	27	27	27
DD	50	50	75	75	85	85	110	110	115
DO	40	40	65	65	75	75	100	100	100

# Gli opzionali Serie AX - Optionals Series AX

## Valvola limitatrice della corsa di lavoro Ram stroke limit valve

Codice/Code W

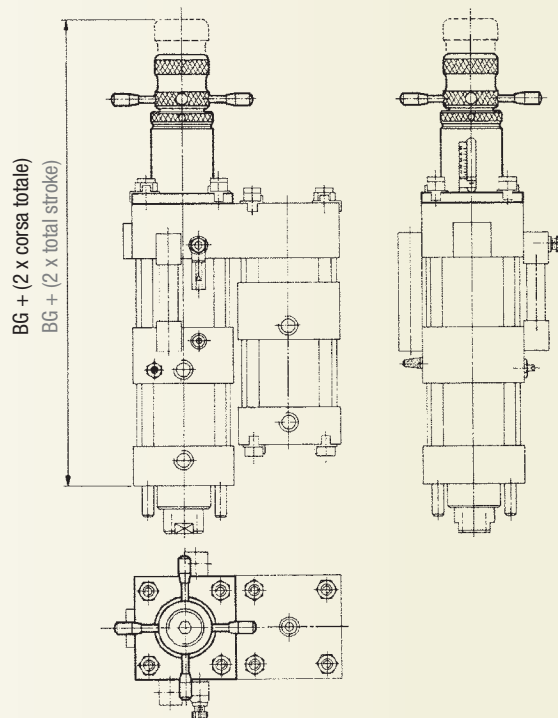


Serie/Series	AX	AX	AX	AX	AX	AX	AX	AX
Tipo/Type	0840	0950	1063	1180	12100	13125	14160	15200
$\alpha^*$	7,2	6,3	7,8	9,8	11,2	11,2	11,2	11,2
BA	176	200	210	210	275	275	332	336
BB	-	-	-	-	-	-	corsa totale total stroke	corsa totale total stroke
BC	27	24	34	37	48	53	68	68
BD	45	62	67	77	110	120	138	155
BE	45	60	60	60	80	80	120	120
BF	58	72	75	75	95	95	105	105
BG	440	450	495	500	595	620	645	680

$\alpha^*$  Coefficiente corsa di lavoro  
Coefficient of working stroke

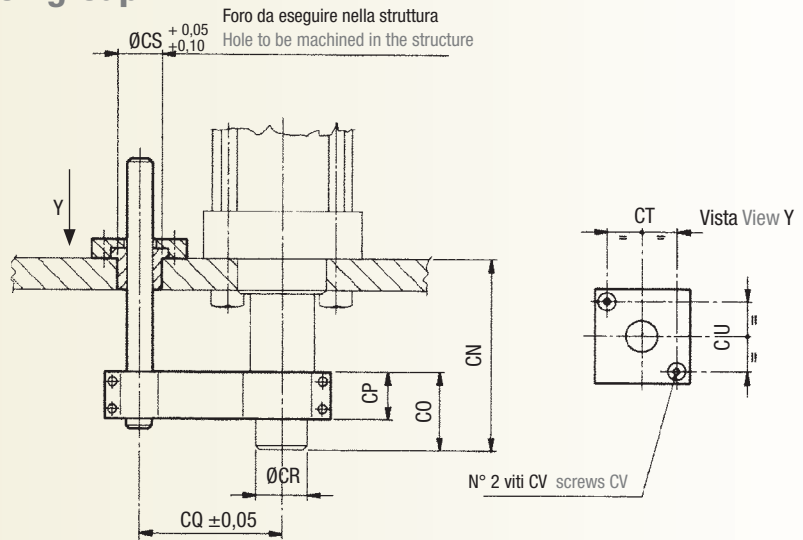
## Regolazione meccanica Mechanical regulation

Codice/Code XR



## Gruppo antirotazione Anti-rotation group

Codice/Code R



Serie/Series	AX	AX	AX	AX	AX	AX	AX
Tipo/Type	1063	1180	12100	13125	14160	15200	16200
$\alpha^*$	7,8	9,8	11,2	11,2	11,2	11,2	12
CN	91	111	126	141	161	161	185
CO	38	46	55	55	60	60	60
CP	25	30	35	35	35	35	35
CQ	70	90	104	117	155	155	180
CR	30	40	60	60	80	80	90
CS	25	28	36	36	46	46	46
CT	20	26	38	38	45	45	45
CU	30	37	38	38	45	45	45
CV	M4X12	M6X16	M6X16	M6X16	M6X16	M6X16	M6X16
BG	146	146	148	148	208	208	308
BH	65	65	75	75	75	75	75
BL	80	80	100	100	100	100	100
BM	40	40	60	60	60	60	60
BN	6,5	6,5	8,5	8,5	8,5	8,5	8,5
BO	G1/8"	G1/8"	G1/4"	G1/4"	G1/4"	G1/4"	G1/4"
BP	45	45	53	53	53	53	53

$\alpha^*$  Coefficiente corsa di lavoro  
Coefficient of working stroke

## Serbatoio esterno External reservoir

Codice/Code SN

